

2022 3

2022 3
2022 3

2022 3

3

2022 3

2022

2022 3

1

1.1

1.2

1.3

1.4

1.5

1.6

1.7

2

2.1

2.2

2.3

2.4

3

3.1

3.2

3.3

4

4.1

4.2

5

5.1

5.2

6

6.1

6.2

6.3

6.4

6.5

6.6

6.7

7

7.1
8
8.1
8.2
8.3
8.4
8.5
9
9.1
9.2
10
10.1
10.2
10.3
10.4
11
11.1
11.2
11.3
11.4
11.5
12
12.1
12.2
13

1.

2.

3.

4.

5.

1.

2.

3.

1

2021 10

2021 11

1 /

10 /

5000 /

1.1

1.2

1.2.1

1 2014.4.24 2015.1.1

2 2018.10.26

3 2018.1.1

4 2020 4 29

5 (

2007 11 1)

6 34 2015 6 5

7 2013 101 2013 10

25

8 [2015]4

2015 1 9 ;

9 ([2009]56 2009 7

27)

10 (

[2013]4 2013 1 18)

11 HJ589-2021

12 () [2018]8

13 () [2019]17

1.2.2

1 (HJ589-2010)

2 (GB 18218-2018)

3 (HJ169-2018)

4 (GB3095-2012)

5 (GBZ1-2001)

6 2018 4 4

7 (GB3838-2002)

8 (GB/T14848-2017)

9 (GB36600 2018)

10 (GB16297-1996)

11 GB50974-2014

12 TSGR0004-2016

13

Q/SY1310-2010

14

GB 18599-2020

1.2.3

1 ([2014]119 2014 12 29)

2 [2012]5 2012 2 6

3 ([2013]89 2013 7 4)

4 (2006.1.8)

5 (2012.2.6)

6 (2013.1.1)

7 2018 1 11

1.3

1

2 /

3

4

1.4

1

3

2

3

3

1.5

1.5.1

1.5.2

1

2

3

4

5

1.6

1

2

4

1.7

1.7.1

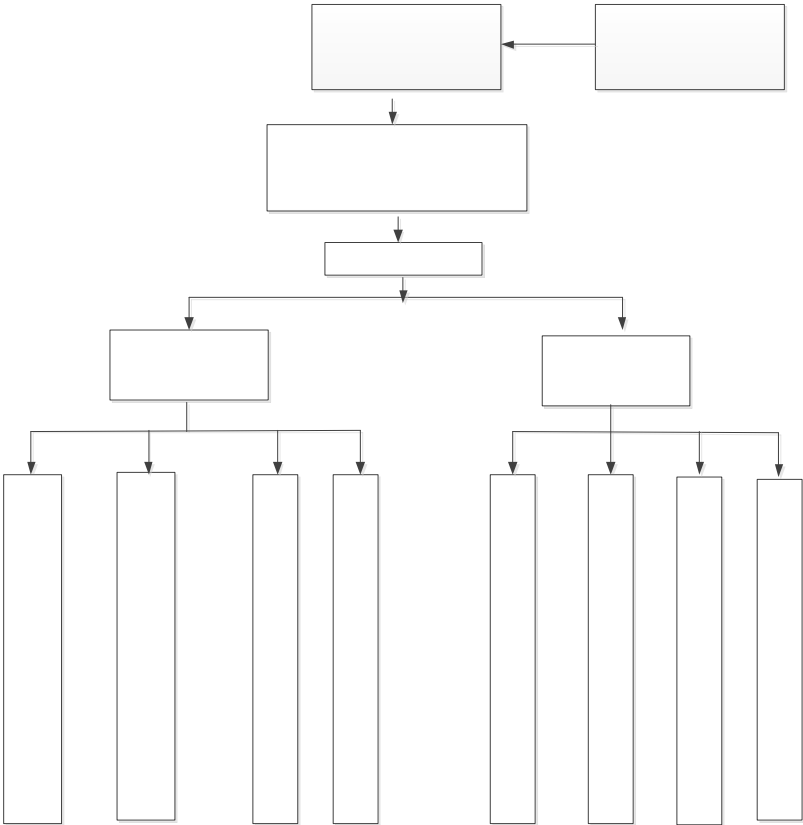
1

2

3

1.7-1

1.7-1



1.7-1

1.7.3

2

2.1

2.1.1

198

1 /

10 /

5000 /

2.1-1

2.1-1

	133111		
	71179.32		
	37.514	118.684	
	198		
			257599

2.1-2

1	10 / 5000 /		2020 11 12	[2020]50	/	/	
2	1 /		2021 7 27	[2021]37	/	/	



2.1.2

12%

2.2

2.2.1

3

1/8000 1/10000 1/12000 11.61m 2m

2.2.2

10.1% 2.8m/s 12.4 -11.8
36.3 533mm

1

12.4

39.6

-15.1

110km	317	10^8m^3		
			11	
			302.9km	
	38.8km	200km ²		
				3m ³ /s
5m ³ /s				
52.5km	38km			
			312km ²	
	25.8km	93km ²		36m ³ /s
6	14600t			
			21.5km	839km ²
83.4km ²	5		44.9m ³ /s	1/10000 1/8000
60	11000t		56	8500t
	4	2500t		
				47.3km
			510km ²	354m ³ /s
	66			
			5	10^4m^3

59 4.92 10⁴m³ 7 0.08 10⁴m³

2

1.5m 1/10000

24.63g/L 167.53g/L

300m 500m 20g/L

2.3

5km

5km 2.3-1 2

2.3-1 5km

		m		
	NW	1400	160	
	S	1300	260	
	NE	2500	415	
	NE	3100	305	
	SW	2800	6550	
	N	3700	420	
	NE	4500	102	
	NE	3400	188	
	NW	2800	380	
	NE	3100	454	
	SE	4300	160	
	SW	4700	560	
	SW	4600	679	
	SW	4800	842	
	SW	3400	518	
	SW	4300	3562	
	NW	3203	62	
500m			0	

5000m	15617	
-------	-------	--

2.4

1 / 10 /
5000 /

2.4.1

2.4.2

2.4.3

2.4.4

2.4.5

2.4.6

3

3.1

1

2-

2

HJ941-2018

A

3.2-1

3.2-1

		CAS		t	t
1		7664-93-9	a,b,c	10	150
2		7664-39-3	a,c	1	137
3		62-53-3	b,c	5	80
4	2-	95-53-4	-	7.5	40
1		67-56-1	a,c	10	2849.6
3		-	a,b	2500	22
a	c		b	d	e

3.2

3.3-1

3.3-1

--	--	--	--	--

1

7

8

9

10

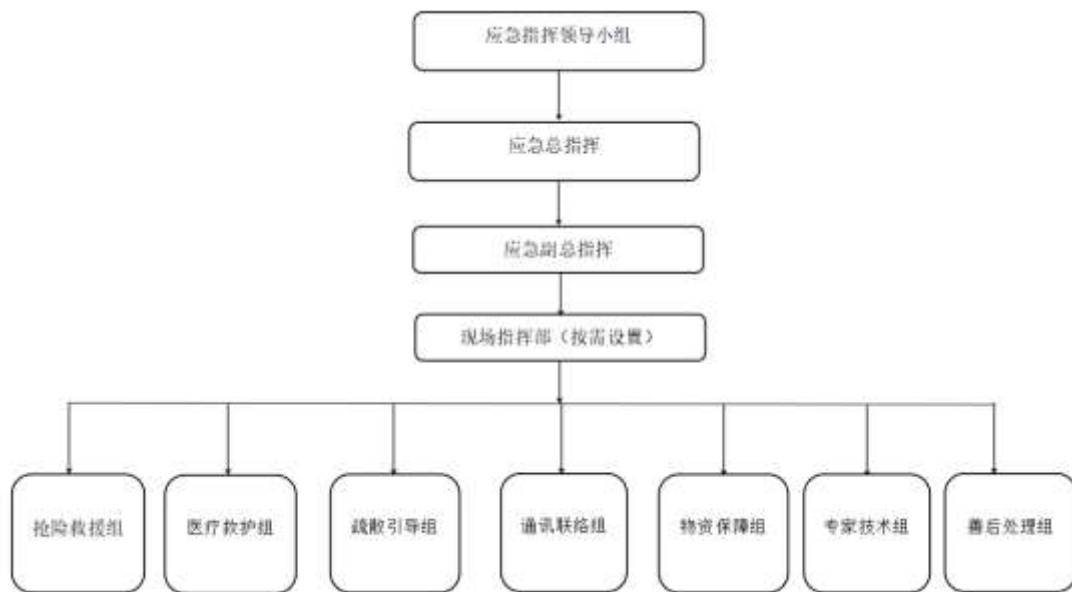
11

12

13

4

4.1



4.1-1

4.2

4.2.1

1.

2

3

2.

1

2

3

4

5

3.

4.2.3

1

,

2

3

4

5

,

6

7

5

5.1

5.1.1

1

2

3

4

5

6

7

5.1.2

1

2

3

4

5

6

7

8

9

5.1.3

1

1

1

2

3

4

5

6

2

1

2

3

4

3

1

2

3

4

5

4

1

2

3

4

5

6

5

1

2

2

1

2

3

4

5

6

" "

7

8

9

10

11

12

13

3

1

2

3

4

5

4

1

1

2

2

1

2

"

"

3

2

5.2

5.2.1

5.2.2

5.2.3

5.2.4

5.2.5

1

6.1

I

6.1.1

1.

1

2

3

4

5

6

2.

1

2 /

3

4

6.1.2

1.

1

2

3

4

2.

/

6.2.3

1

2

3

/

6.2

1.

1

2

3

4

2.

1

2

3

4

6.3

6.3.1

6.3.1.1

1

2

3

4

5

6

7

8

9

10

6.3.1.2

1

2

3

4

5

6

7

6.3.1.3

1

2

3

4

5

6.3.1.4

1

/

/

/

/

3

1

1900m³

6.3.2

6.3.2.1

1

100

300

II

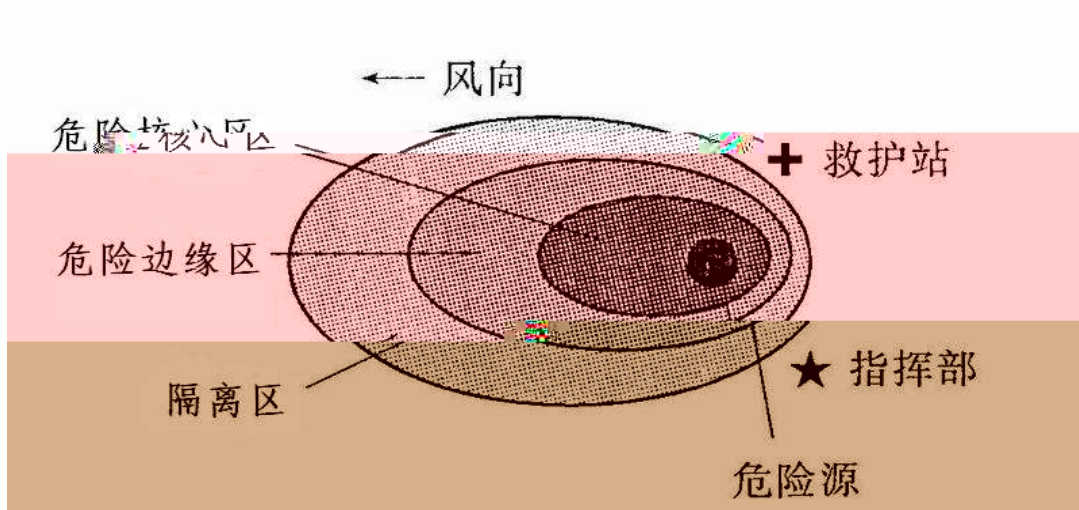
40

100

2

II

3



6.3-1

6.3.2.2

1

2

3

6.3.3

6.3.3.1

1

2

3

6.3.3.2

6.3.3.3

6.3.3.4

6.3.3.5

6.3.4

1.

2.

6.3.5

1.

1

2

3

4

5

2.

6.3.6

1.

2.

1

2

3

4

5

6

7

3.

1

2

6.4

6.4.1

1.

2.

6.4.2

1.

1

2

3

4

5

2.

6.4.3

1

2

3

4

6.4.4

6.4.5

1

2

3

6.5

6.5.1

COD

1

2

HJ 91.1 HJ 164 HJ 493 HJ 494 HJ 193 HJ 194 HJ/T 55 HJ/T 166 HJ/T
20

2km

10cm

10m×10m

5

1-2kg

HJ589-2021

6.6-1

6.6-1

		CO

6.5.3

6.6

6.6.1

1

2

/

3

4

6.6.2

/

I

-
- 1
 - 2
 - 3
 - 4
 - 5
 - 6

 - 7
 - 8
 - 9
 - 10

6.6.3

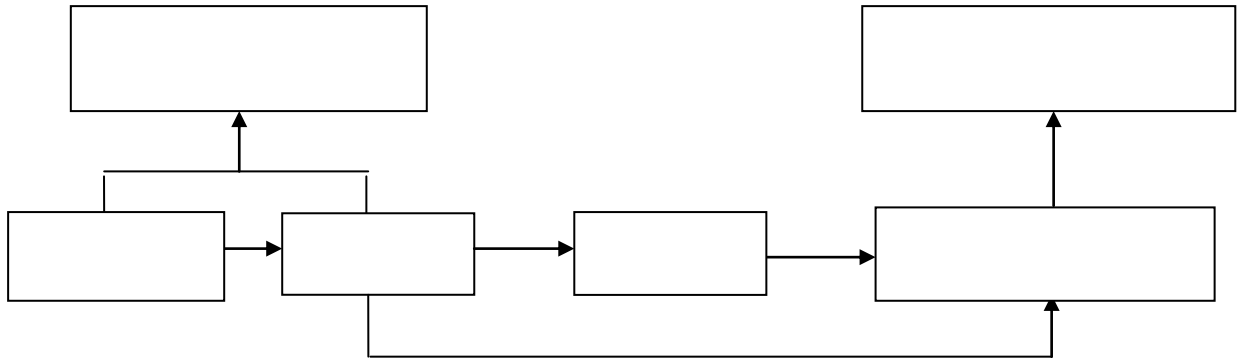
1

6.6.4

- 1
- 2
- 5 10
- 3

- 4

6.6.5



6.6-1

6.7

6.7.1

a

48 h

3

b

48

h

3

c

6.7.2

1

2

3

6.7.3

6.7.3.1

6.7.3.2

1

2

3

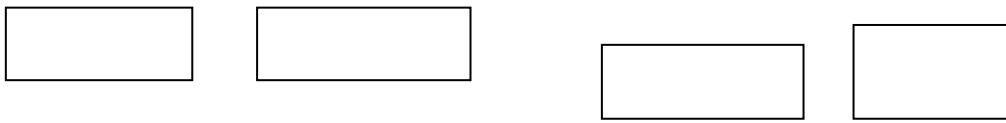
4

7.1

7.1.1

1

7.1-1



7.1-1

2

3

4

7.1.2

7.1.3

7.1.4

8

8.1

1

2

24

3

8.2

8.3

8.3.1

2

8.3.2

8.4

1

2

8.5

8.5.1

24

8.5.2

18

8.5.3

8.5.4

8.5.5

1

1

8.5.6

8.5-1

8.5-1

1		YN-ZD-10	

2			
3		FA/JA	
4		DJS-1	
5	/ / /		
6		DDSJ-308A	
7	COD	/	COD
8		/	
9		/	BOD
10		/	CO
11		/	CO
12		/	

9.1

9.1.1

9.1.1.1

9.1.1.2

1

2

3

4

5

6

9.1.1.3

1

2

3

4

5

9.1.1.4

1

2

3

4

5

9.1.1.5

,

9.2

9.2.1

1

2

3

4

9.2.2

1

2

3

4

5

6

7

10

10.1

1

2

3

1

2

4

1

1

2

3

4

5

6

2

1

2

3

4

5

6

7

3

1

2

3

4

5

4

1

2

3

4

5

6

7

5

1

2

3

4

5

6

7

6

1

2

3

4

5

1

1

10%

30%

2

3

2

1

2

3

4

3

1

2

3

4

5

6

10.2

1

2

3

1

2

4

1

1

2

3

15min

4

119

5

6

2

1

2

3

4

()

5

3

1

2

()

()

()

()

(

)

3

2%

4

1

2

:

:

5

6

1

2

3

4

5

5

1

2

3

10.3

1.

2.

3.

1

2

4.

1

2

a

b

3

1

2

3

2

3

4

2

1

2

3

5.

1

(I)

(II)

1

a) 30%

b) 3

c) 5% 10%

d) 500

e) 5

2

a) 20%

b) 3 3

c) 3% 5% d)

300 e) 3

3

a) 5%

b)

c)

d) 50

e) 1

2

,

3

4

,

5

1

a)

c)

d)

e)

6.

1

2

3

7.

8.

1

1 ,

2

3

4

5

2

3

4

11

11.1

1

1

2

3

4

2

1

2

3

11.2

11.2.1

1

2

3

4

5

11.2.2

1

2

3

4

1

2

3

1

2

3

11.2.3

1

3

1

2

11.2.4

1

1

2

2

1

1

2

7

1

2

11.3

11.3.1

1

2

3

4

5

11.3.2

1

2

3

4

1

2

3

1

2

3

11.3.3

1



2

2

11.3.4

1

1

2

2

1

2

3

3

1

2

3

4

2 3

4

1

2

3

4

5

6

7

8

5

1

2

CPR

6

1

2

3

4

5

6

7

1

2

8

1

2

11.4

11.4.1

1

2

3

11.4.2

1

2

3

4

1

2

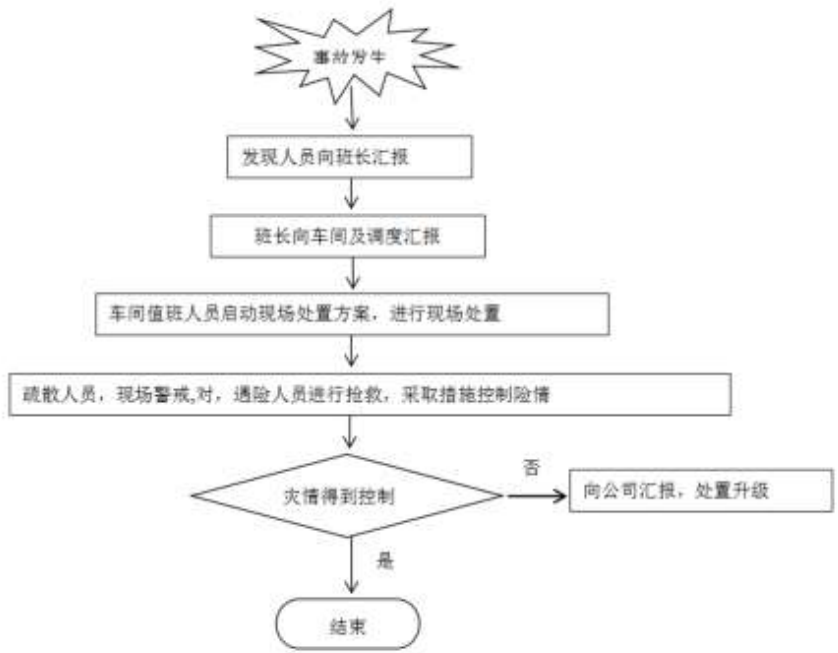
3

1

2

11.4.3

1



2

	pH COD

3

1

11.5

11.4.1

1

2

3

11.4.2

1

2

3

4

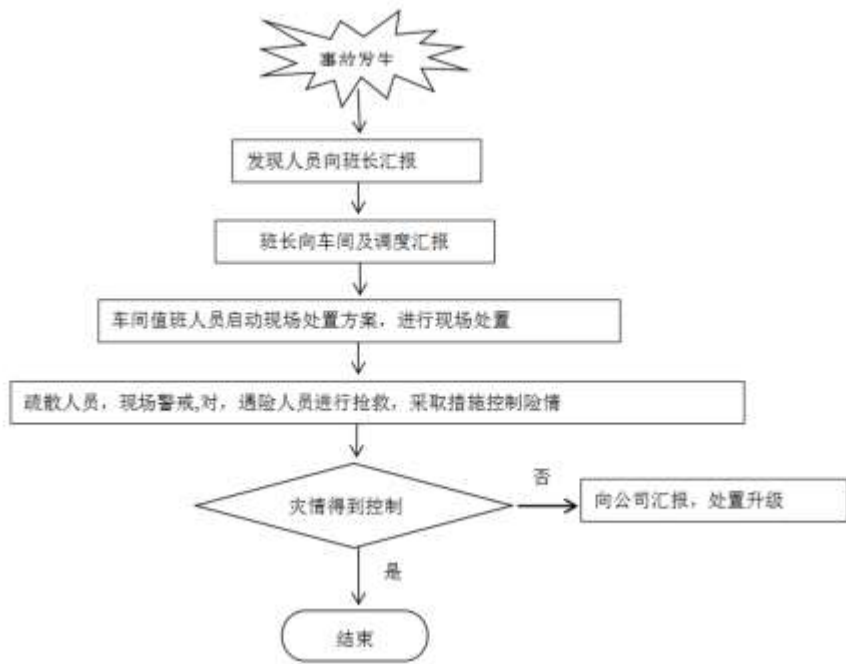
1

2

3

1

2



2

	pH COD

3

1

2

11.4.4

1

2

3

1

2

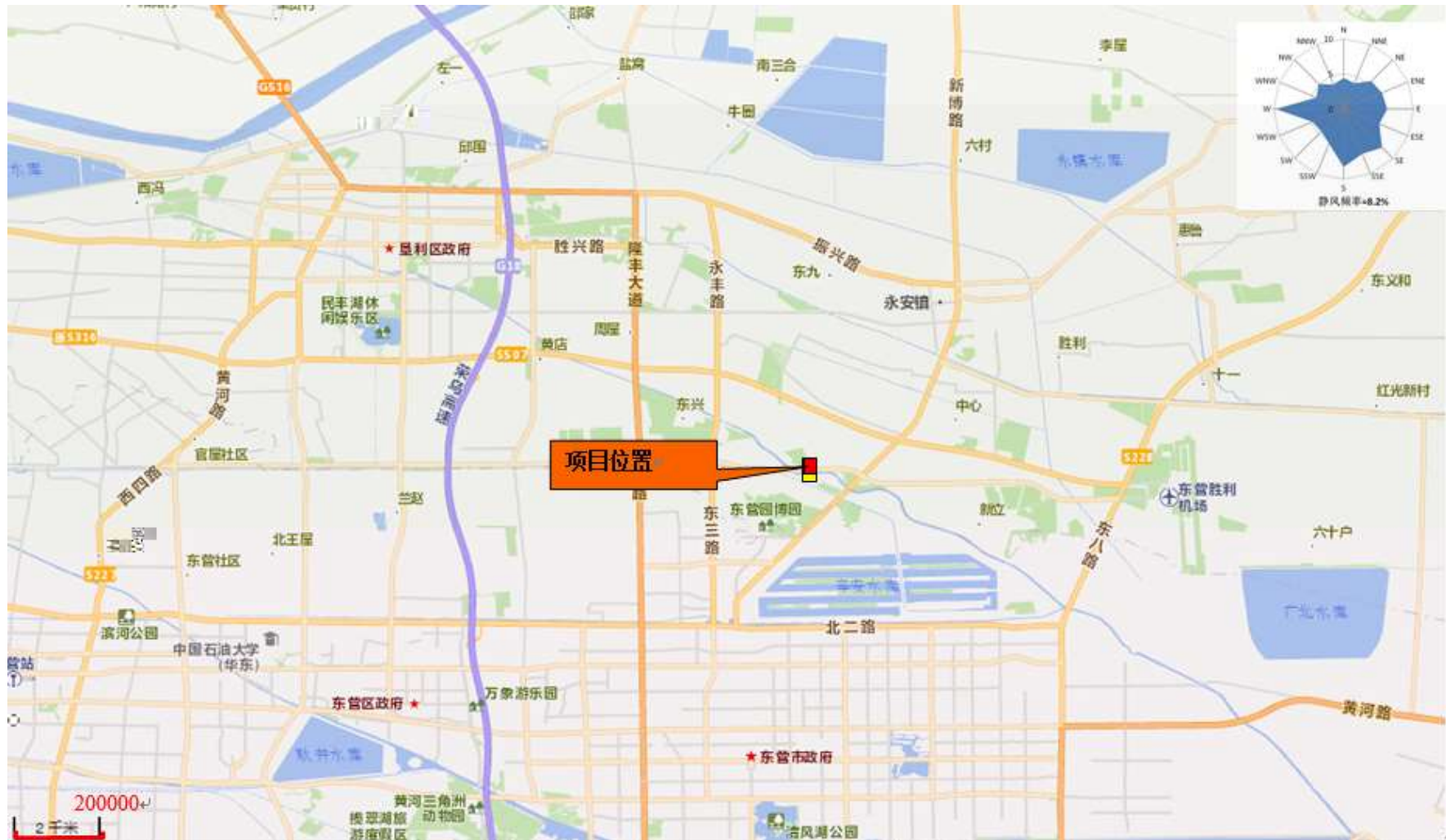
3

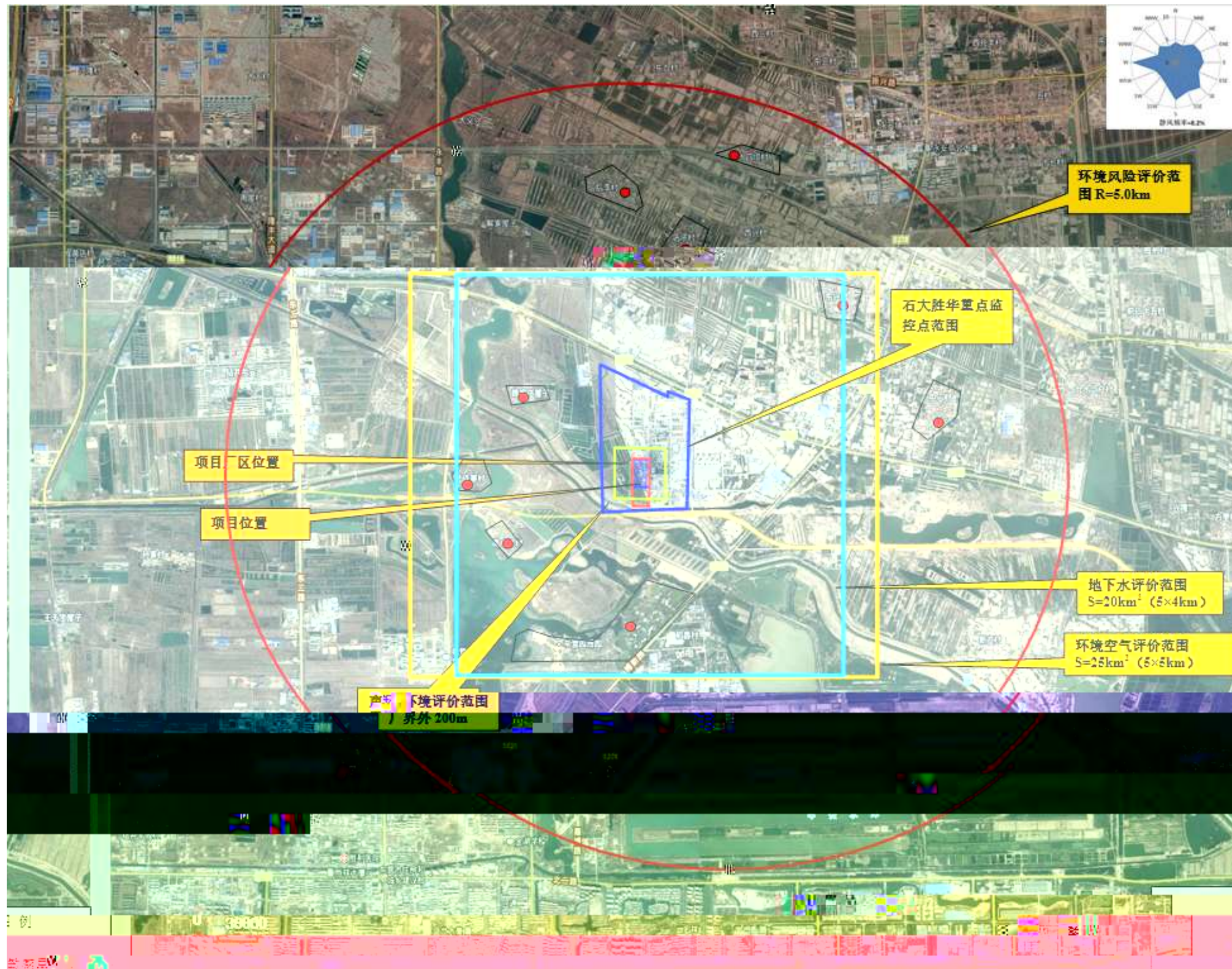
4

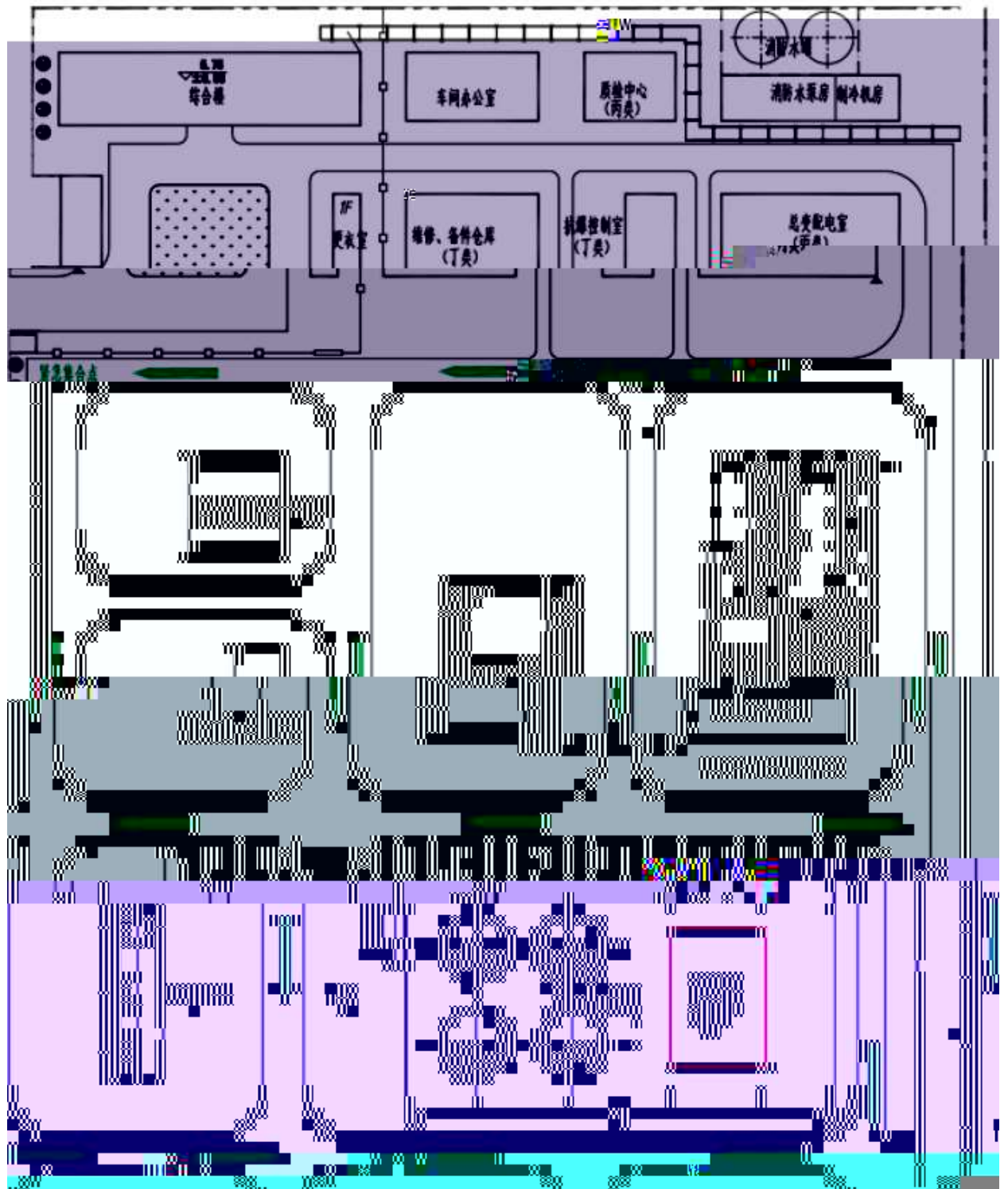
12.1

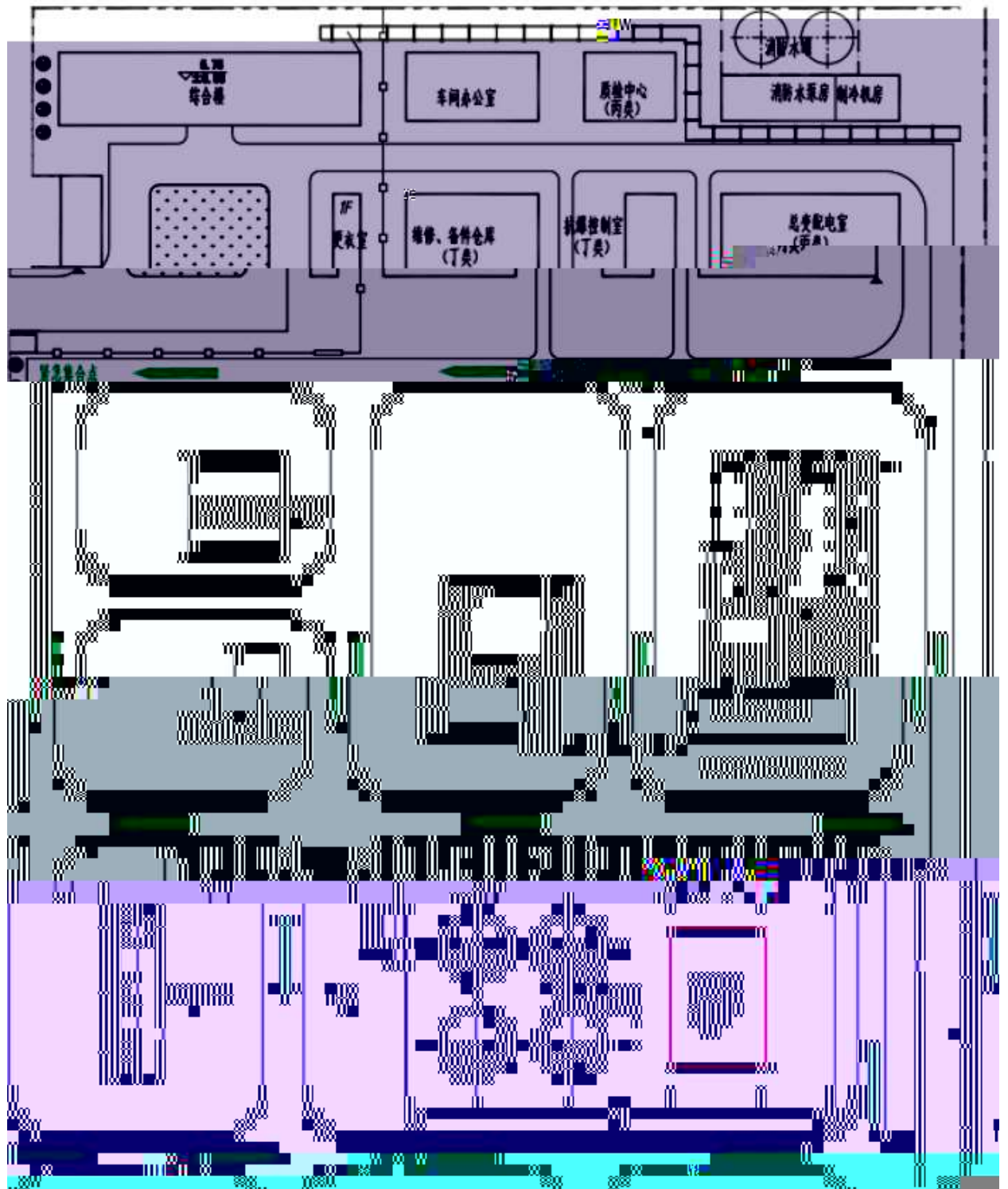
12.2

- 1
 - 2
 - 3
 - 4
 - 5
-











1.

				/	
1					
2					
3					
4					
5					
6					
7					
8					
9	24			2169111 / 2169112 / 2169113	

1		2560190	12		8330190
2		2523124	13		8332323
3		2523119	14		2665190
4		2521742	15		119
5		8696516	16		120
6		2581669	17		122
7		2582898			
8		2521579			
9		2521781			
10		2977111			
11		2521081			

2.

10 / 5000 / ()

			1
			10
			14
			2
			10
			4
			6
			10
			10
			2
			4
			10
			10
			10
			5
			2
			2
			10
			10
			1
			8

(10 / 5000 / ())

		P201003B-P201004B	
		P201003B-P201004B	
		E201008	
		E201008	
		V201010B	
		V201010B	
		V201008	
		V201008	
		V201012	
		V201012	
		V201001	
		V201001	

东营富华达远新材料有限公司突发环境事件应急预案

		V201001	
		V201001	
	()		
	()		
	()		
	()		
		D202001	
		D202001	
		D202002	
		D202002	
		D202003	
		D202003	

东营富华达远新材料有限公司突发环境事件应急预案

3.

